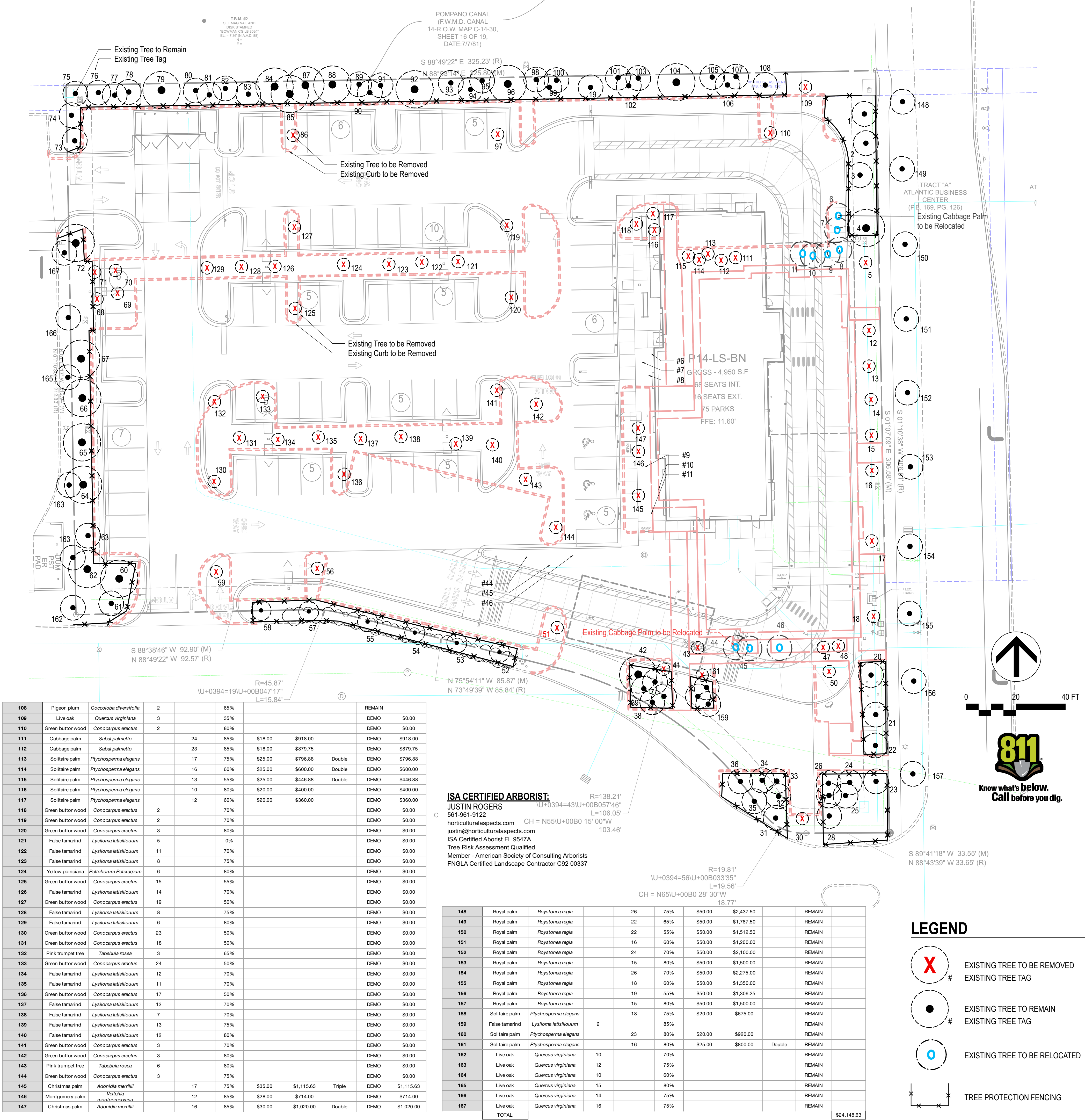


EXISTING TREES LIST

Tree Number	Common Name	Genus Species	DBH (Inches)	Height CT/GW/CW	Dollar per foot (Dollars)	Value	Notes	Status	Removed
1	Royal palm	<i>Roystonea regia</i>		18	90%	\$50.00	\$2,025.00		REMAIN
2	Pigeon plum	<i>Coccoloba diversifolia</i>	2		80%				REMAIN
3	Royal palm	<i>Roystonea regia</i>		13	65%	\$50.00	\$1,056.25		REMAIN
4	Pigeon plum	<i>Coccoloba diversifolia</i>	4		55%				REMAIN
5	Royal palm	<i>Roystonea regia</i>		24	80%	\$50.00	\$2,400.00		DEMO
6	Cabbage palm	<i>Sabal palmetto</i>		18	90%	\$18.00	\$729.00		RELOCATED
7	Cabbage palm	<i>Sabal palmetto</i>		18	75%	\$18.00	\$607.50		RELOCATED
8	Cabbage palm	<i>Sabal palmetto</i>		18	75%	\$18.00	\$607.50		RELOCATED
9	Cabbage palm	<i>Sabal palmetto</i>		19	75%	\$18.00	\$641.25		RELOCATED
10	Cabbage palm	<i>Sabal palmetto</i>		22	75%	\$18.00	\$742.50		RELOCATED
11	Cabbage palm	<i>Sabal palmetto</i>		16	65%	\$18.00	\$468.00		RELOCATED
12	Royal palm	<i>Roystonea regia</i>		20	60%	\$50.00	\$1,500.00		DEMO
13	Pigeon plum	<i>Coccoloba diversifolia</i>	8		65%				DEMO
14	Royal palm	<i>Roystonea regia</i>		22	85%	\$50.00	\$2,337.50		DEMO
15	Pigeon plum	<i>Coccoloba diversifolia</i>	3		70%				DEMO
16	Royal palm	<i>Roystonea regia</i>		30	80%	\$50.00	\$3,000.00		DEMO
17	Royal palm	<i>Roystonea regia</i>		26	80%	\$50.00	\$2,600.00		DEMO
18	Royal palm	<i>Roystonea regia</i>		16	70%	\$50.00	\$1,400.00		DEMO
19	Pigeon plum	<i>Coccoloba diversifolia</i>	2		80%				REMAIN
20	Pigeon plum	<i>Coccoloba diversifolia</i>	7		45%				REMAIN
21	Royal palm	<i>Roystonea regia</i>		17	15%	\$50.00	\$318.75		REMAIN
22	Pigeon plum	<i>Coccoloba diversifolia</i>	6		40%				REMAIN
23	Royal palm	<i>Roystonea regia</i>		21	75%	\$50.00	\$1,968.75		REMAIN
24	Cabbage palm	<i>Sabal palmetto</i>		20	85%	\$18.00	\$765.00		REMAIN
25	Cabbage palm	<i>Sabal palmetto</i>		22	70%	\$18.00	\$693.00		REMAIN
26	Cabbage palm	<i>Sabal palmetto</i>		20	80%	\$18.00	\$720.00		REMAIN
27	Cabbage palm	<i>Sabal palmetto</i>		21	80%	\$18.00	\$756.00		REMAIN
28	Cabbage palm	<i>Sabal palmetto</i>		18	80%	\$18.00	\$648.00		REMAIN
29	False tamarind	<i>Lysitoma latisilioum</i>	2		80%				REMAIN
30	Pigeon plum	<i>Coccoloba diversifolia</i>	2		60%				DEMO
31	Pigeon plum	<i>Coccoloba diversifolia</i>	4		65%				REMAIN
32	Cabbage palm	<i>Sabal palmetto</i>		23	65%	\$18.00	\$672.75		REMAIN
33	Cabbage palm	<i>Sabal palmetto</i>		22	75%	\$18.00	\$742.50		REMAIN
34	Cabbage palm	<i>Sabal palmetto</i>		20	75%	\$18.00	\$675.00		REMAIN
35	Cabbage palm	<i>Sabal palmetto</i>		4	60%	\$18.00	\$0.00		REMAIN
36	Pigeon plum	<i>Coccoloba diversifolia</i>		22	80%				REMAIN
37	Solitaire palm	<i>Pythosperma elegans</i>		20	80%	\$25.00	\$1,000.00	Double	REMAIN
38	Solitaire palm	<i>Pythosperma elegans</i>		18	75%	\$25.00	\$843.75	Double	REMAIN
39	Solitaire palm	<i>Pythosperma elegans</i>		15	75%	\$20.00	\$562.50		REMAIN
40	Solitaire palm	<i>Pythosperma elegans</i>		17	70%	\$25.00	\$743.75	Double	REMAIN
41	Solitaire palm	<i>Pythosperma elegans</i>		16	75%	\$20.00	\$600.00		DEMO
42	Green buttonwood	<i>Conocarpus erectus</i>	9		60%				REMAIN
43	Solitaire palm	<i>Pythosperma elegans</i>		25	80%	\$20.00	\$1,000.00		DEMO
44	Cabbage palm	<i>Sabal palmetto</i>		20	85%	\$18.00	\$765.00		RELOCATED
45	Cabbage palm	<i>Sabal palmetto</i>		17	85%	\$18.00	\$650.25		RELOCATED
46	Cabbage palm	<i>Sabal palmetto</i>		17	85%	\$18.00	\$650.25		RELOCATED
47	Solitaire palm	<i>Pythosperma elegans</i>		24	75%	\$25.00	\$1,125.00	Double	DEMO
48	Solitaire palm	<i>Pythosperma elegans</i>		17	60%	\$20.00	\$510.00		DEMO
50	Solitaire palm	<i>Pythosperma elegans</i>		17	40%	\$25.00	\$425.00	Double	DEMO
51	Green buttonwood	<i>Conocarpus erectus</i>	3		70%				DEMO
52	Pigeon plum	<i>Coccoloba diversifolia</i>	10		75%				REMAIN
53	Pigeon plum	<i>Coccoloba diversifolia</i>	6		50%				REMAIN
54	Pigeon plum	<i>Coccoloba diversifolia</i>	8		75%				REMAIN
55	Pigeon plum	<i>Coccoloba diversifolia</i>	6		60%				REMAIN
56	Green buttonwood	<i>Conocarpus erectus</i>	22		55%				DEMO
57	Pigeon plum	<i>Coccoloba diversifolia</i>	6		60%				REMAIN
58	Pigeon plum	<i>Coccoloba diversifolia</i>	9		55%				REMAIN
59	Green buttonwood	<i>Conocarpus erectus</i>	24		50%				DEMO
60	Green buttonwood	<i>Conocarpus erectus</i>	23		55%				REMAIN
61	Pigeon plum	<i>Coccoloba diversifolia</i>	7		45%				REMAIN
62	False tamarind	<i>Lysitoma latisilioum</i>	9		60%				REMAIN
63	False tamarind	<i>Lysitoma latisilioum</i>	2		50%				REMAIN
64	False tamarind	<i>Lysitoma latisilioum</i>	14		70%				REMAIN
65	False tamarind	<i>Lysitoma latisilioum</i>	13		75%				REMAIN
66	False tamarind	<i>Lysitoma latisilioum</i>	14		50%				REMAIN
67	False tamarind	<i>Lysitoma latisilioum</i>	10		70%				REMAIN
68	False tamarind	<i>Lysitoma latisilioum</i>	14		75%				DEMO
69	Green buttonwood	<i>Conocarpus erectus</i>	6		40%				DEMO
70	False tamarind	<i>Lysitoma latisilioum</i>	12		0%				DEMO
71	False tamarind	<i>Lysitoma latisilioum</i>	9		65%				DEMO
72	Green buttonwood	<i>Conocarpus erectus</i>	21		55%				REMAIN
73	Green buttonwood	<i>Conocarpus erectus</i>	25		55%				REMAIN
74	Pigeon plum	<i>Coccoloba diversifolia</i>	6		65%				REMAIN
75	Cabbage palm	<i>Sabal palmetto</i>		6	85%	\$18.00	\$229.50		REMAIN
76	Cabbage palm	<i>Sabal palmetto</i>		25	80%	\$18.00	\$900.00		REMAIN
77	Cabbage palm	<i>Sabal palmetto</i>		18	75%	\$18.00	\$607.50		REMAIN
78	Cabbage palm	<i>Sabal palmetto</i>		18	90%	\$18.00	\$729.00		REMAIN
79	Live oak	<i>Quercus virginiana</i>	10		85%				REMAIN
80	Cabbage palm	<i>Sabal palmetto</i>		19	80%	\$18.00	\$684.00		REMAIN
81	Cabbage palm	<i>Sabal palmetto</i>		20	80%	\$18.00	\$720.00		REMAIN
82	Cabbage palm	<i>Sabal palmetto</i>		17	65%	\$18.00	\$497.25		REMAIN
83	Pigeon plum	<i>Coccoloba diversifolia</i>	4		40%				REMAIN
84	Cabbage palm	<i>Sabal palmetto</i>		24	85%	\$18.00	\$918.00		REMAIN
85	Cabbage palm	<i>Sabal palmetto</i>		23	85%	\$18.00	\$879.75		REMAIN
86	Green buttonwood	<i>Conocarpus erectus</i>	18		50%				DEMO
87	Cabbage palm	<i>Sabal palmetto</i>		20	60%	\$18.00	\$540.00		REMAIN
88	Pigeon plum	<i>Coccoloba diversifolia</i>	4		0%				REMAIN
89	Cabbage palm	<i>Sabal palmetto</i>		20	70%	\$18.00	\$630.00		REMAIN
90	Cabbage palm	<i>Sabal palmetto</i>		17	75%	\$18.00	\$573.75		REMAIN
91	Cabbage palm	<i>Sabal palmetto</i>		21	85%	\$18.00	\$803.25		REMAIN
92	Live oak	<i>Quercus virginiana</i>	16		75%				REMAIN
93	Cabbage palm	<i>Sabal palmetto</i>		22	85%	\$18.00	\$841.50		REMAIN
94	Cabbage palm	<i>Sabal palmetto</i>		24	90%	\$18.00	\$972.00		REMAIN
95	Cabbage palm	<i>Sabal palmetto</i>		16	65%	\$18.00	\$468.00		REMAIN
96	Pigeon plum	<i>Coccoloba diversifolia</i>	7		60%				REMAIN
97	Green buttonwood	<i>Conocarpus erectus</i>	3		80%				DEMO
98	Cabbage palm	<i>Sabal palmetto</i>		22	80%	\$18.00	\$792.00		REMAIN
99	Cabbage palm	<i>Sabal palmetto</i>		19	85%	\$18.00	\$726.75		REMAIN
100	Cabbage palm	<i>Sabal palmetto</i>		22	80%	\$18.00	\$792.00		REMAIN
101	Cabbage palm	<i>Sabal palmetto</i>		23	75%	\$18.00	\$776.25		REMAIN
102	Cabbage palm	<i>Sabal palmetto</i>		25	70%	\$18.00	\$787.50		REMAIN
103	Cabbage palm	<i>Sabal palmetto</i>		25	80%	\$18.00	\$900.00		REMAIN
104	Live oak	<i>Quercus virginiana</i>	4		75%				REMAIN
105	Cabbage palm	<i>Sabal palmetto</i>		23	75%	\$18.00	\$776.25		REMAIN
106	Cabbage palm	<i>Sabal palmetto</i>		26	80%	\$18.00	\$936.00		REMAIN
107	Cabbage palm	<i>Sabal palmetto</i>		24	75%	\$18.00	\$810.00		REMAIN



**ISA CERTIFIED ARBORIST:**  
JUSTIN ROGERS  
561-961-9122  
horticulturalaspects.com  
justin@horticulturalaspects.com  
ISA Certified Arborist FL 9547A  
Tree Risk Assessment Qualified  
Member - American Society of Consulting Arborists  
FNGLA Certified Landscape Contractor C92 00337

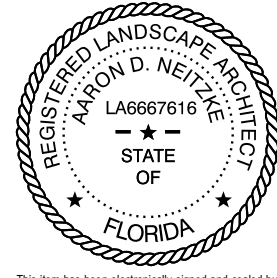
148	Royal palm	<i>Roystonea regia</i>		26	75%	\$50.00	\$2,437.50		REMAIN
149	Royal palm	<i>Roystonea regia</i>		22	65%	\$50.00	\$1,787.50		REMAIN
150	Royal palm	<i>Roystonea regia</i>		22	55%	\$50.00	\$1,512.50		REMAIN
151	Royal palm	<i>Roystonea regia</i>		16	60%	\$50.00	\$1,200.00		REMAIN
152	Royal palm	<i>Roystonea regia</i>		24	70%	\$50.00	\$2,100.00		REMAIN
153	Royal palm	<i>Roystonea regia</i>		15	80%	\$50.00	\$1,500.00		REMAIN
154	Royal palm	<i>Roystonea regia</i>		26	70%	\$50.00	\$2,275.00		REMAIN
155	Royal palm	<i>Roystonea regia</i>		18	60%	\$50.00	\$1,350.00		REMAIN
156	Royal palm	<i>Roystonea regia</i>		19	55%	\$50.00	\$1,306.25		REMAIN
157	Royal palm	<i>Roystonea regia</i>		15	80%	\$50.00	\$1,500.00		REMAIN
158	Solitaire palm	<i>Pythosperma elegans</i>		18	75%	\$20.00	\$675.00		REMAIN
159	False tamarind	<i>Lysitoma latisilioum</i>	2		85%				REMAIN
160	Solitaire palm	<i>Pythosperma elegans</i>		23	80%	\$20.00	\$920.00	Double	REMAIN
161	Solitaire palm	<i>Pythosperma elegans</i>		16	80%	\$25.00	\$800.00		REMAIN
162	Live oak	<i>Quercus virginiana</i>	10		70%				REMAIN
163	Live oak	<i>Quercus virginiana</i>	12		75%				REMAIN
164	Live oak	<i>Quercus virginiana</i>	10		60%				REMAIN
165	Live oak	<i>Quercus virginiana</i>	15		80%				REMAIN
166	Live oak	<i>Quercus virginiana</i>	14		75%				REMAIN
167	Live oak	<i>Quercus virginiana</i>	16		75%				REMAIN
TOTAL							\$24,146.63		



**Chick-fil-A**  
Chick-fil-A  
5200 Buffington Road  
Atlanta, Georgia 30349-2998



Manley Land Design, Inc.  
51 Old Canton Street  
Alpharetta, Georgia 30009  
770.442.8171 tel



Digitally signed by  
Aaron D Neitzke  
DN: c=US,  
o=MANLEY LAND  
DESIGN,  
dnQualifier=A0141  
0D00000186B79EB  
A9B0066956F,  
cn=Aaron D  
Neitzke  
Date: 2023.10.30  
16:52:06 -0400'

**CHICK-FIL-A**  
ATLANTIC & POWERLINE  
2100 W ATLANTIC BLVD  
POMPANO BEACH, FL 33069

**FSU# 05557**

REVISION SCHEDULE  
NO. DATE BY DESCRIPTION  
1 10/30/23 LANDSCAPE COMMENTS

MLD PROJECT # 2023145  
PRINTED FOR PERMIT  
DATE 8/3/23  
DRAWN BY KCN

Information contained on this drawing and in all digital files  
produced for above named project may not be reproduced in  
any manner without express written or verbal consent from  
authorized project representatives.  
SHEET

**Tree Disposition Plan**

SHEET NUMBER  
**L-001**

**DRC**  
PZ23-12000037  
12/06/2023